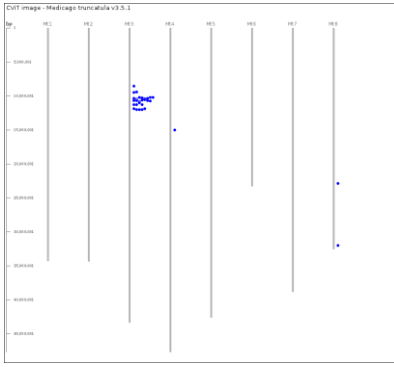
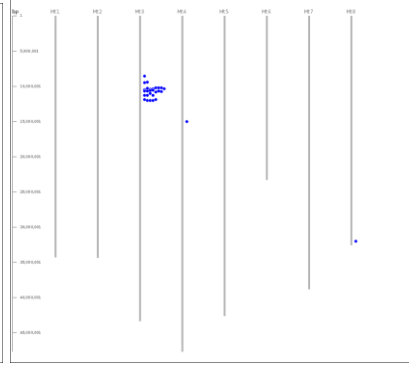


NT-1

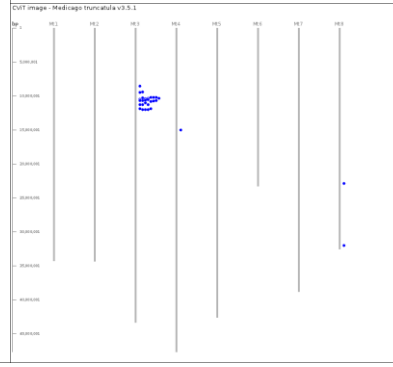
LccA4.04C10 *M. truncatula*



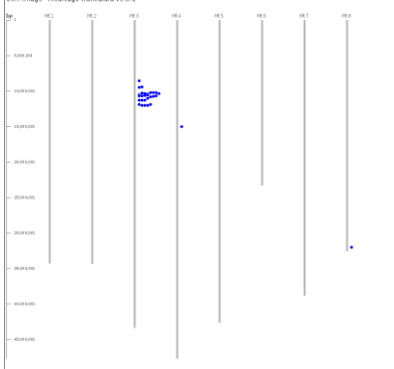
LccB2.01C6 *M. truncatula*



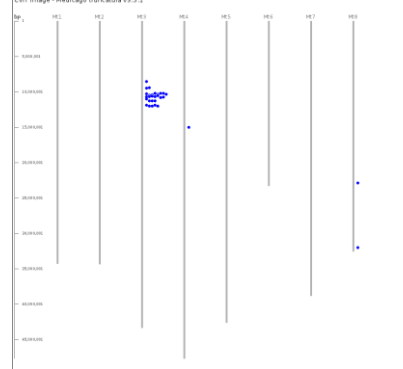
LccB2.06C6 *M. truncatula*



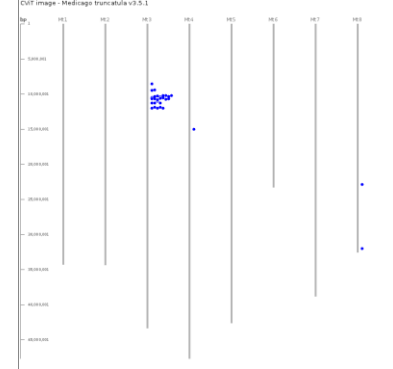
LccB2.20C6 *M. truncatula*



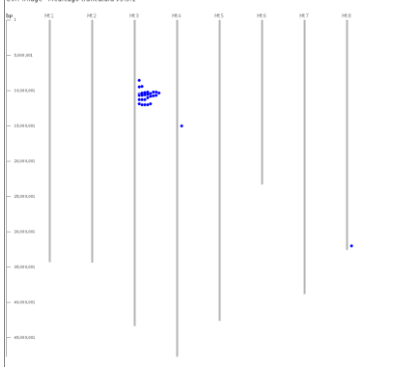
LccB3.09C6 *M. truncatula*



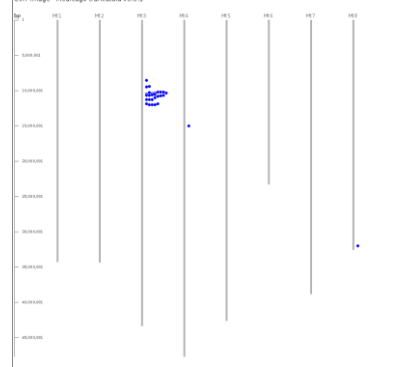
LccB6.07C10 *M. truncatula*



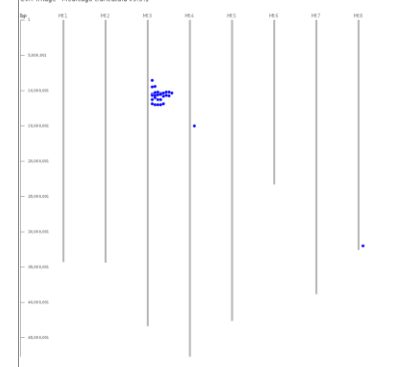
LccB6.13C10 *M. truncatula*



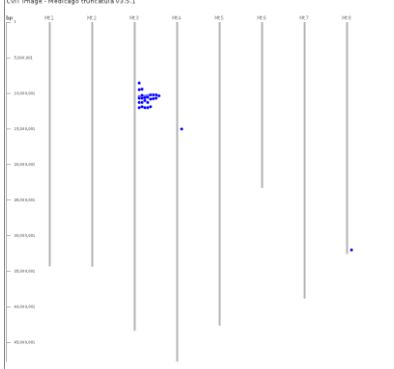
Lco1.01C10 *M. truncatula*



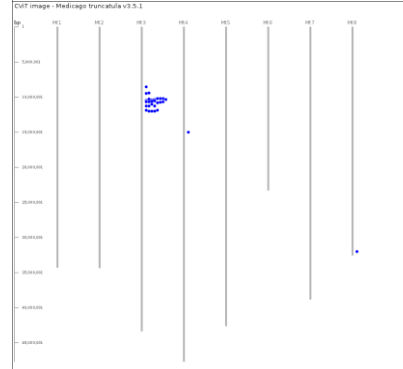
Lni1.03C6 *M. truncatula*



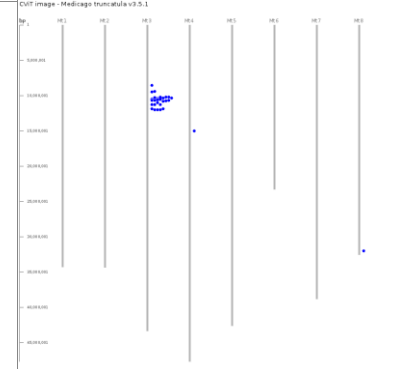
Lco1.06C6 *M. truncatula*



Lto1.05C10 *M. truncatula*

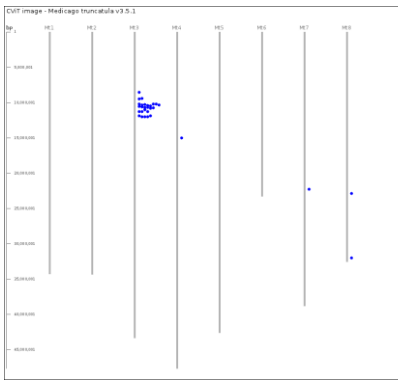


Lto1.07C10 *M. truncatula*

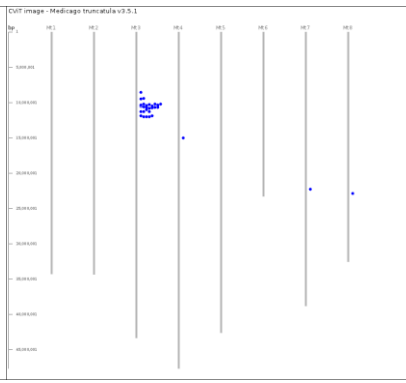


NT-2

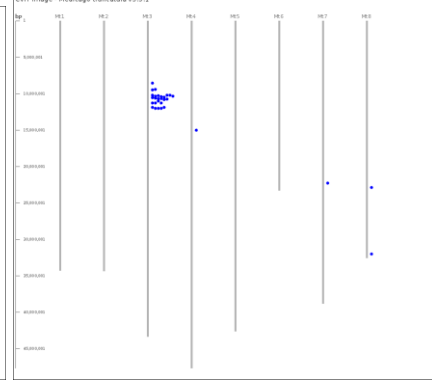
LccA1.04C10 *M. truncatula*



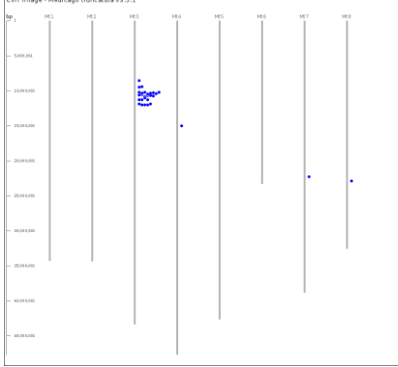
LccB1.02C1 *M. truncatula*



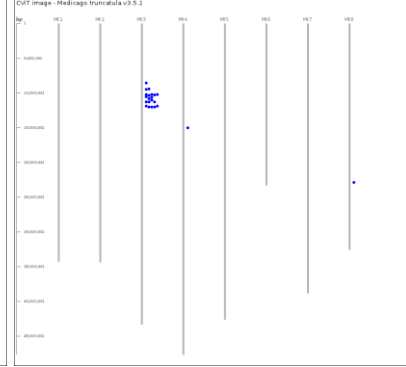
LccB5.12C10 *M. truncatula*



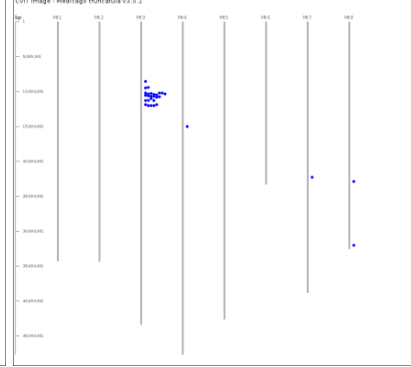
LccB5.21C10 *M. truncatula*



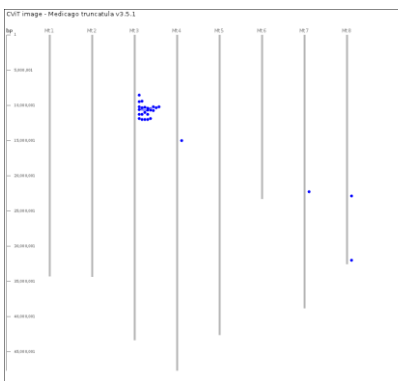
LccB6.08C10 *M. truncatula*



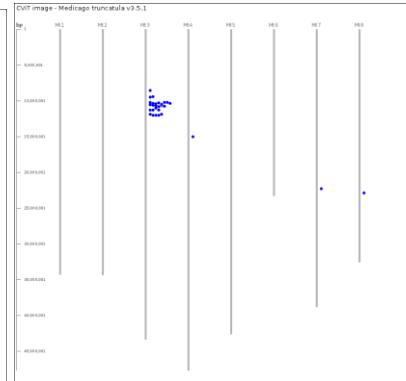
Ler1.01C10 *M. truncatula*



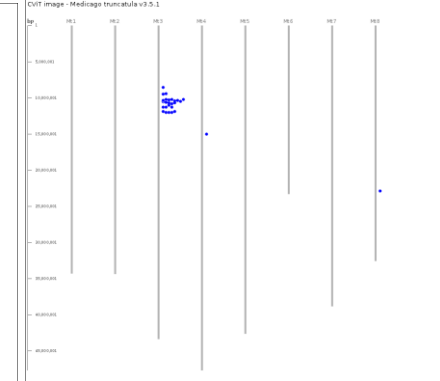
Ler1.02C10 *M. truncatula*



Ler1.03C1 *M. truncatula*

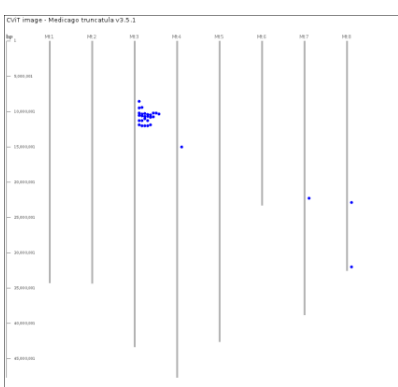


Lla1.01C10 *M. truncatula*

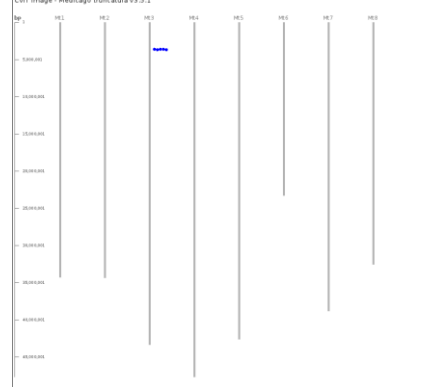


NT-3

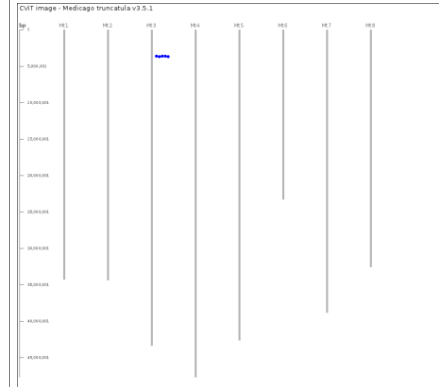
Lod1.01C10 *M. truncatula*



LccB1.24C9 *M. truncatula*

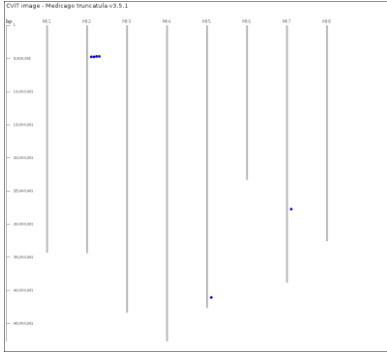


LccB2.18C9 *M. truncatula*

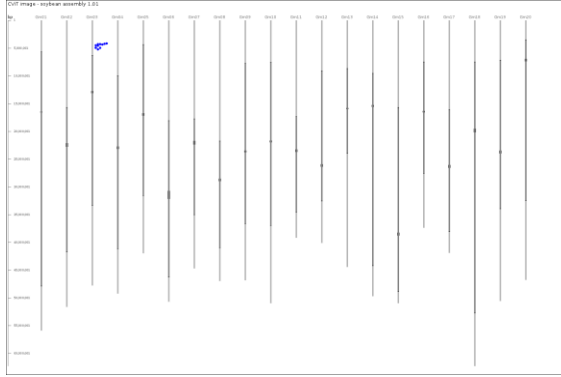


NT-4

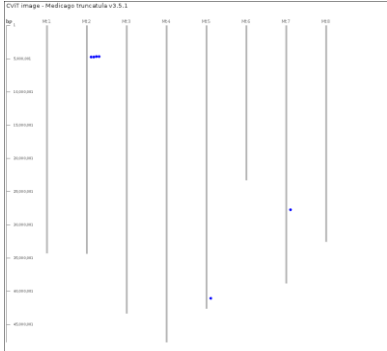
LccA1.13C11 *M. truncatula*



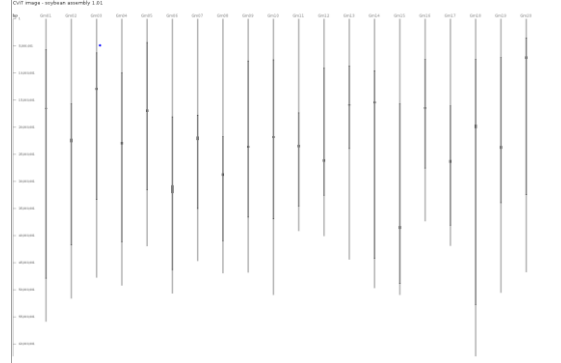
LccA1.13C11 *G. max*



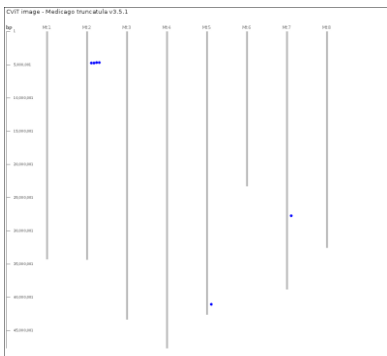
Lla1.02C11 *M. truncatula*



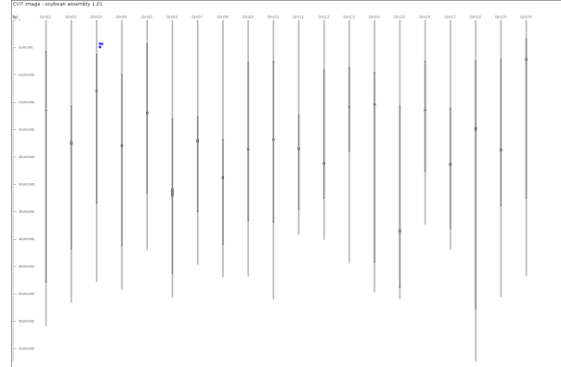
Lla1.02C11 *G. max*



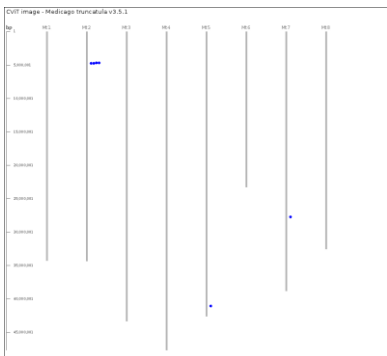
Lni1.05C11 *M. truncatula*



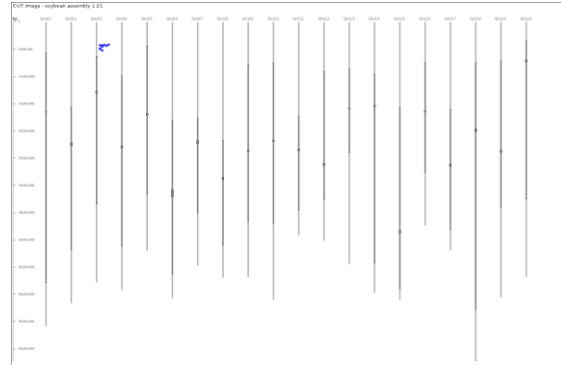
Lni1.05C11 *G. max*



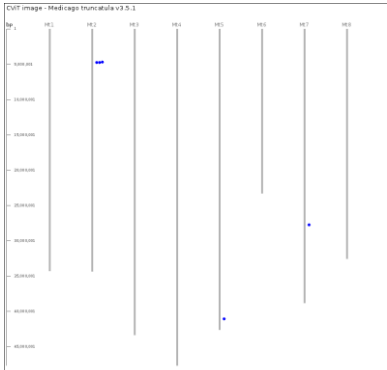
Lod1.08C11 *M. truncatula*



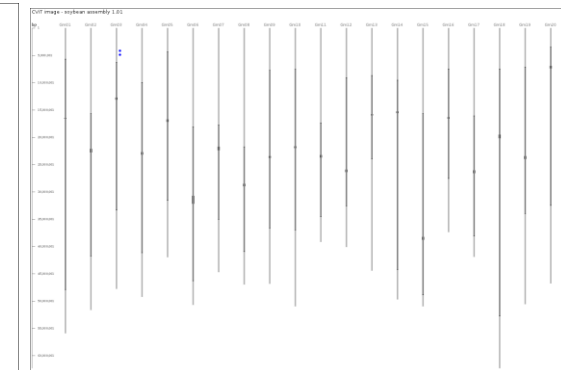
Lod1.08C11 *G. max*



Lto1.16C11 *M. truncatula*

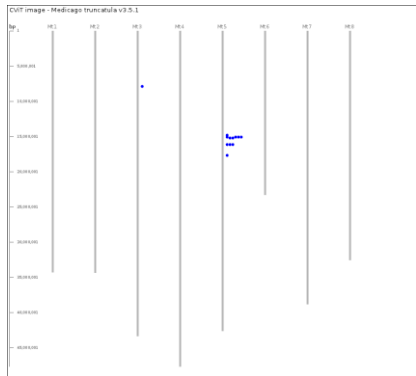


Lto1.16C11 *G. max*

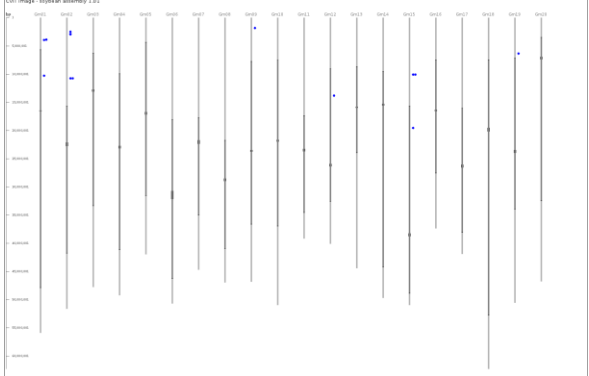


NT-5

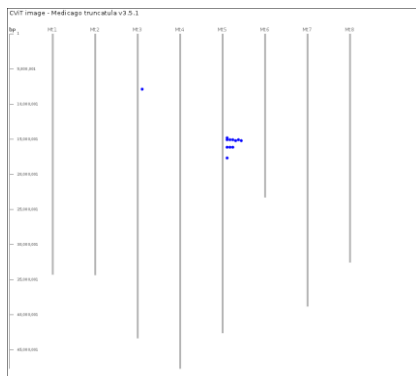
LccB1.03C1 *M. truncatula*



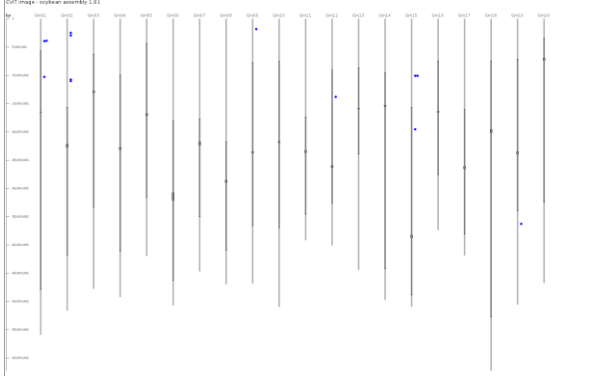
LccB1.03C1 *G. max*



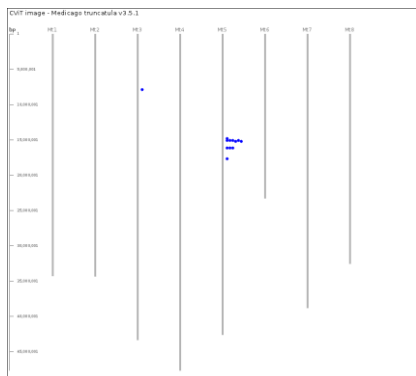
LccB1.30C9 *M. truncatula*



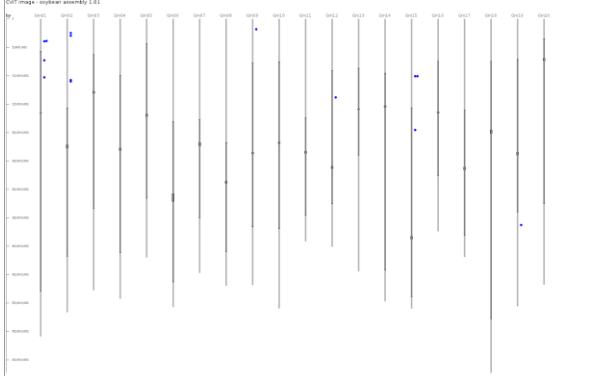
LccB1.30C9 *G. max*



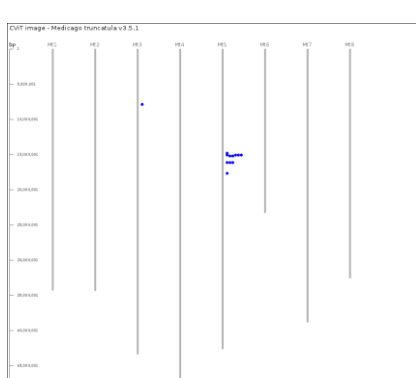
LccB2.23C9 *M. truncatula*



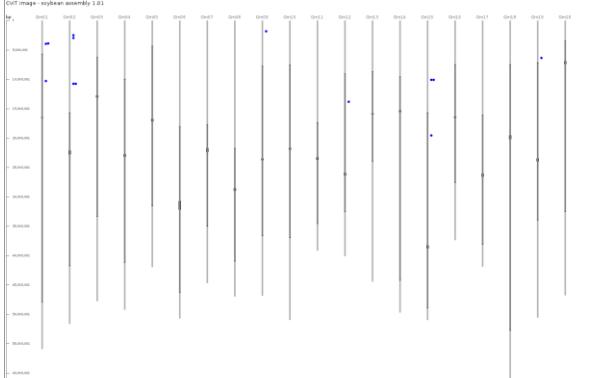
LccB2.23C9 *G. max*



Ler1.04C1 *M. truncatula*

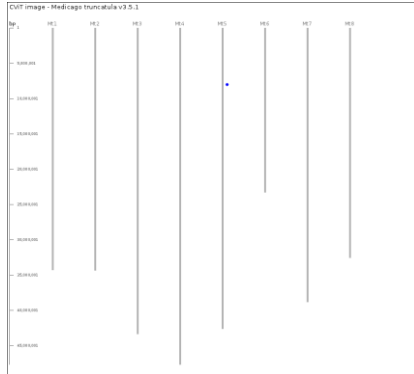


Ler1.04C1 *G. max*

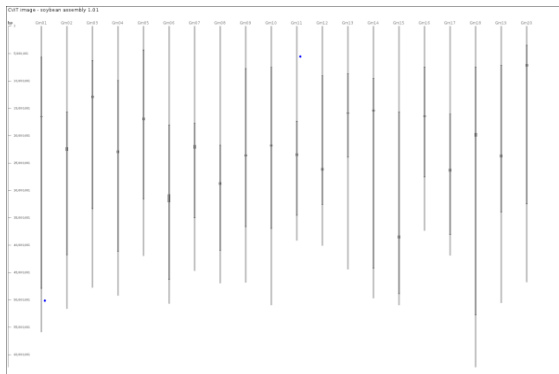


NT-6

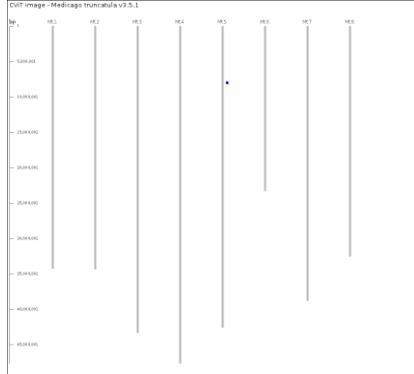
LccB2.01C12 *M. truncatula*



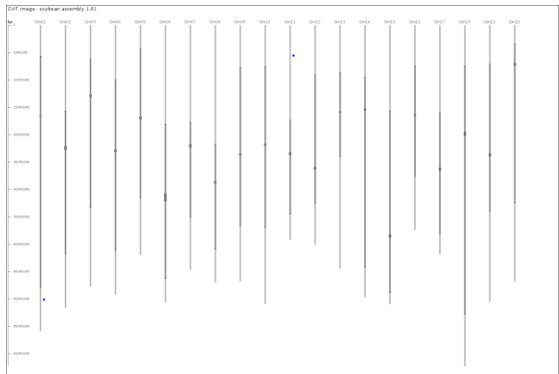
LccB2.01C12 *G. max*



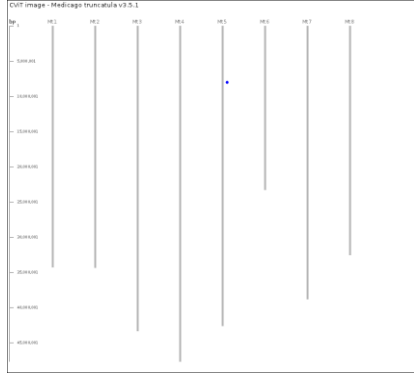
Lla1.06C12 *M. truncatula*



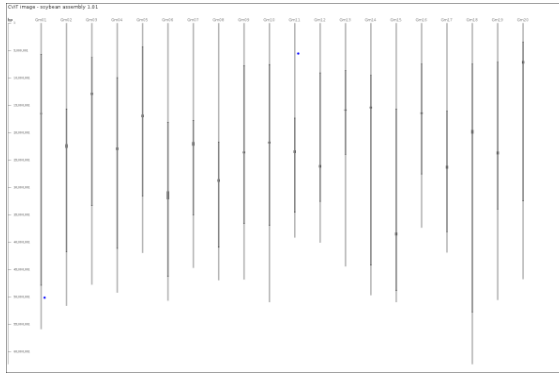
Lla1.06C12 *G. max*



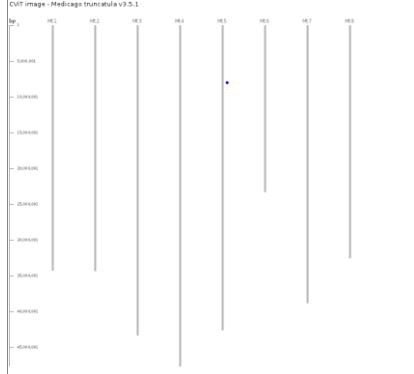
Lni1.04C12 *M. truncatula*



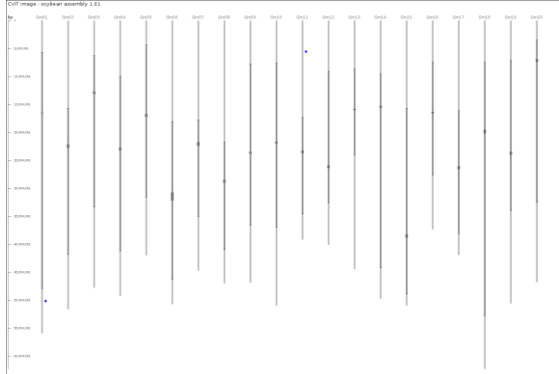
Lni1.04C12 *G. max*



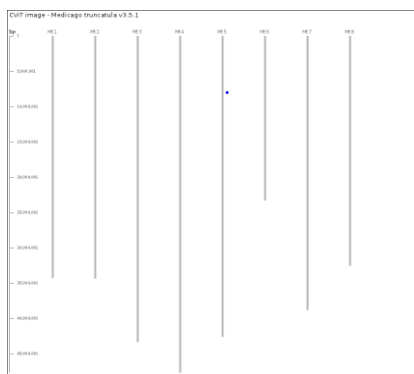
Lni2.01C12 *M. truncatula*



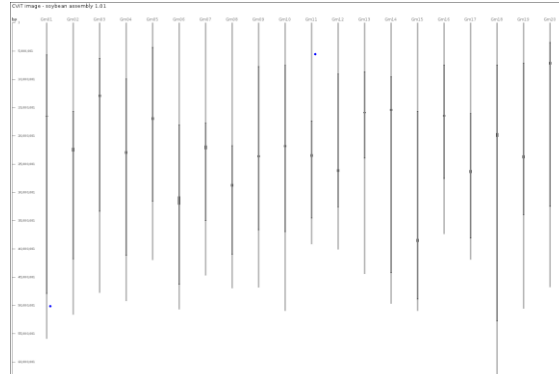
Lni2.01C12 *G. max*



Lto1.02C12 *M. truncatula*

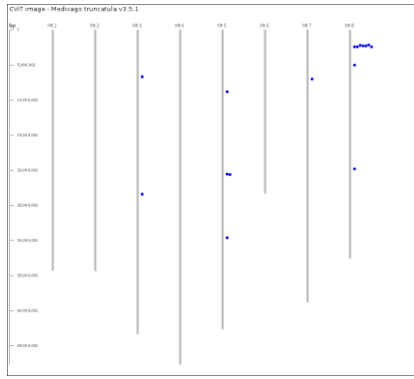


Lto1.02C12 *G. max*

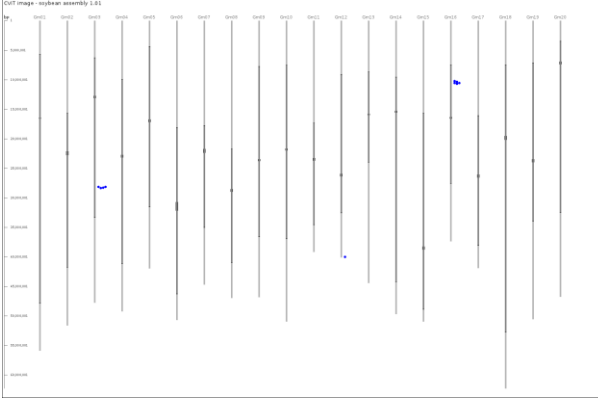


T-1

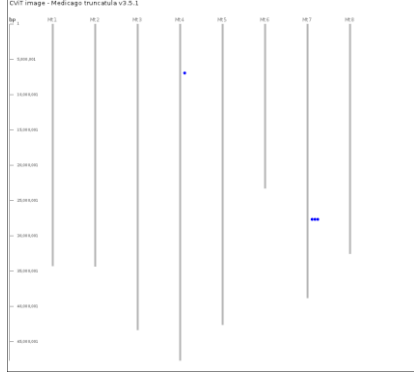
LccB2.08C9 *M. truncatula*



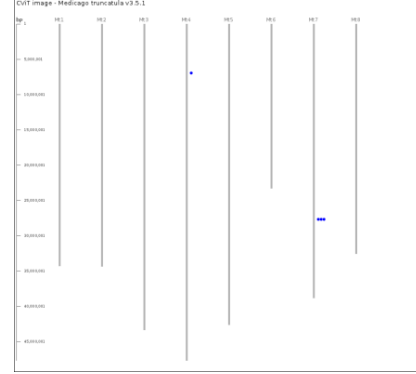
LccB2.08C9 *G. max*



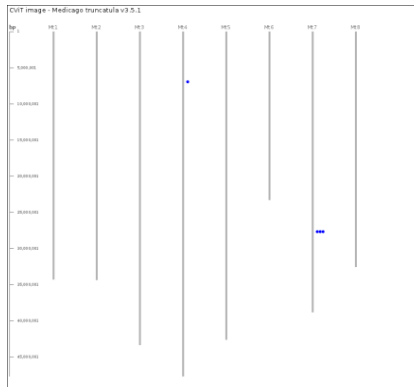
LccB3.14C6 *M. truncatula*



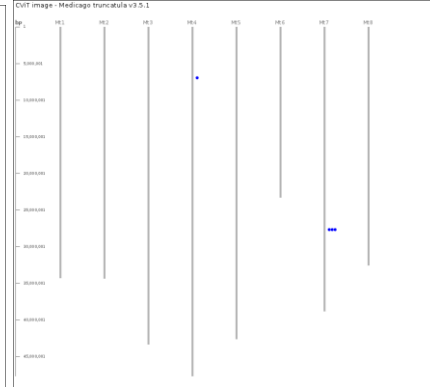
Lni1.01C1 *M. truncatula*



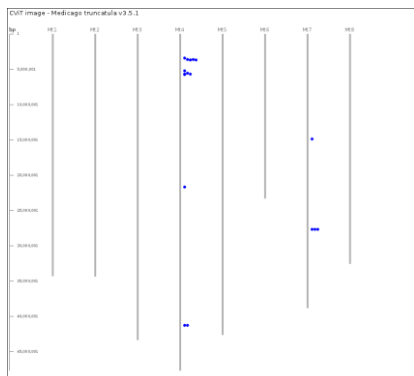
Lto1.02C1 *M. truncatula*



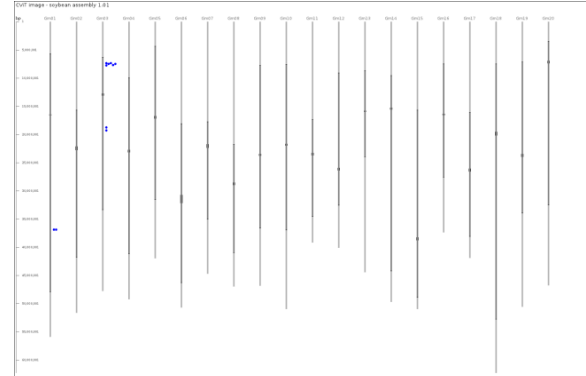
Lto1.03C6 *M. truncatula*



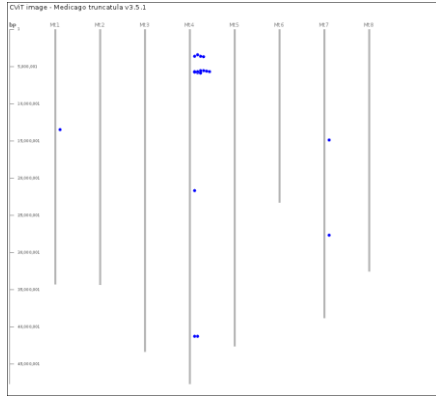
Ler1.06C13 *M. truncatula*



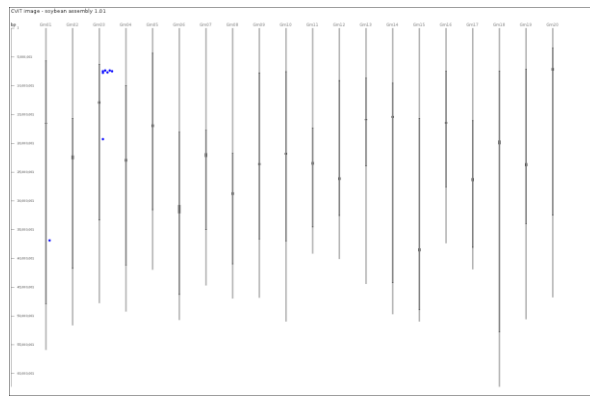
Ler1.06C13 *G. max*



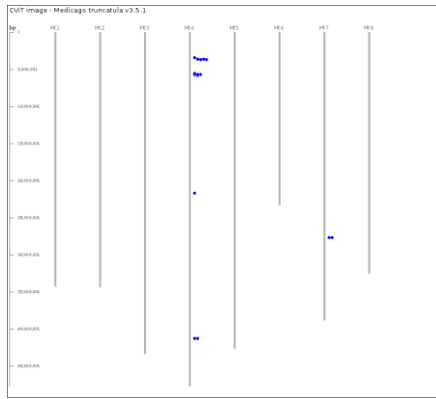
Lla1.01C6 *M. truncatula*



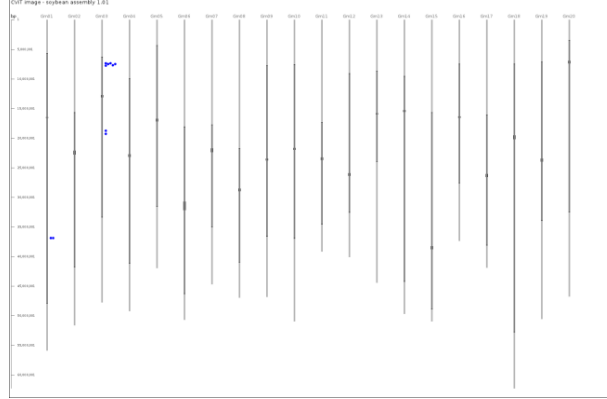
Lla1.01C6 *G. max*



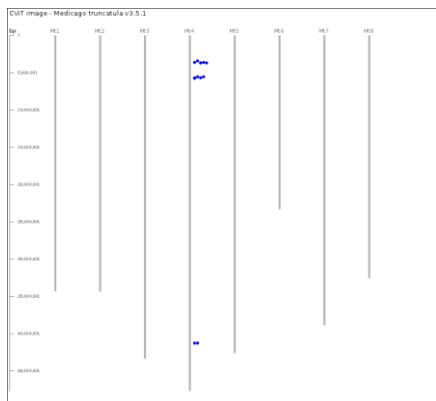
Lla1.06C13 *M. truncatula*



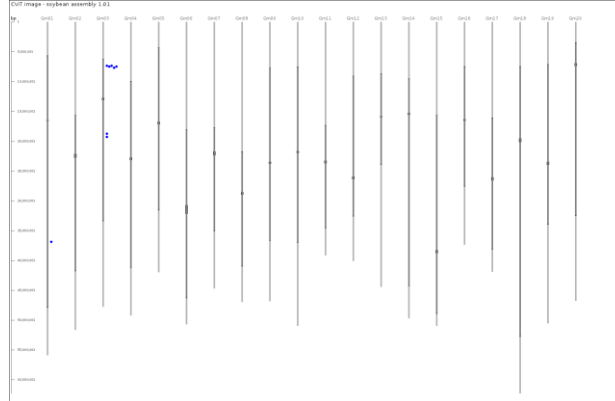
Lla1.06C13 *G. max*



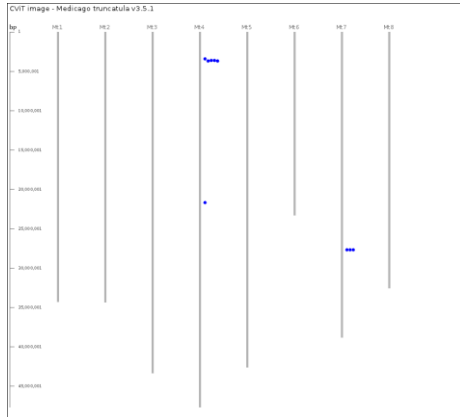
Lni1.05C13 *M. truncatula*



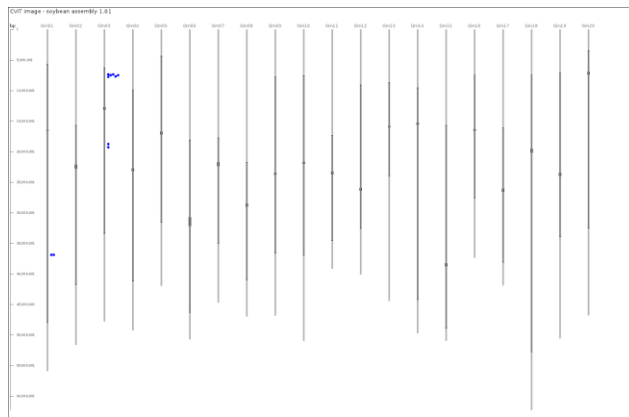
Lni1.05C13 *G. max*



Lni1.07C13 *M. truncatula*

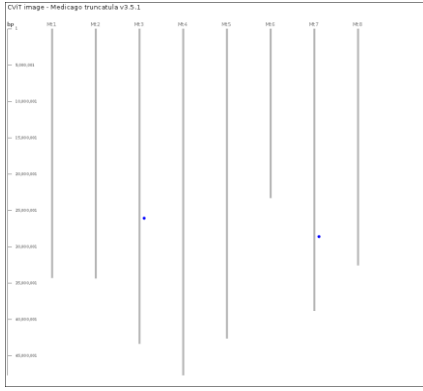


Lni1.07C13 *G. max*

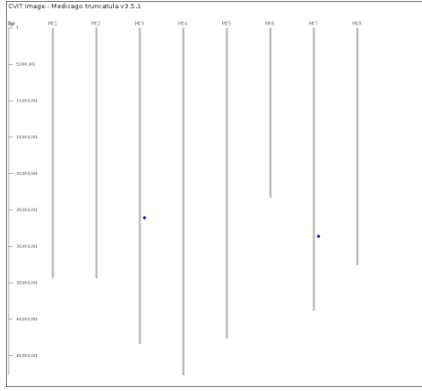


T-2

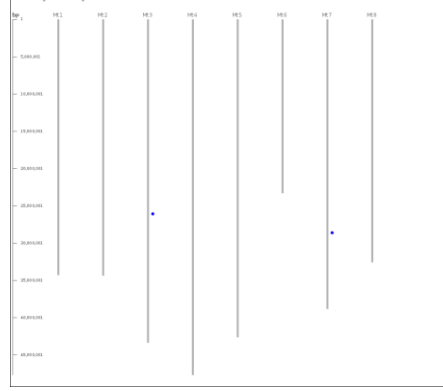
LccB1.03C9 *M. truncatula*



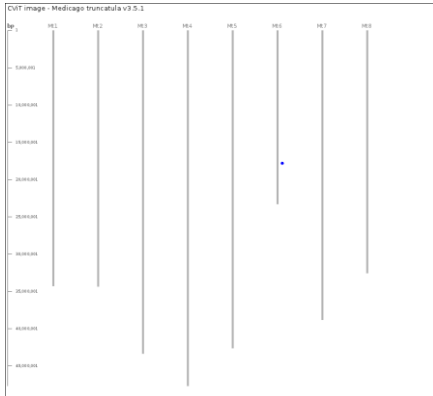
LccB1.08C9 *M. truncatula*



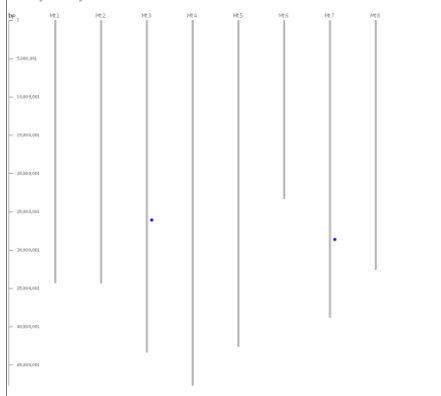
LccB1.34C9 *M. truncatula*



LccB2.10C9 *M. truncatula*

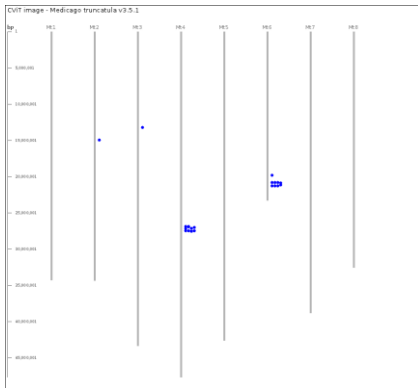


LccB2.27C9 *M. truncatula*

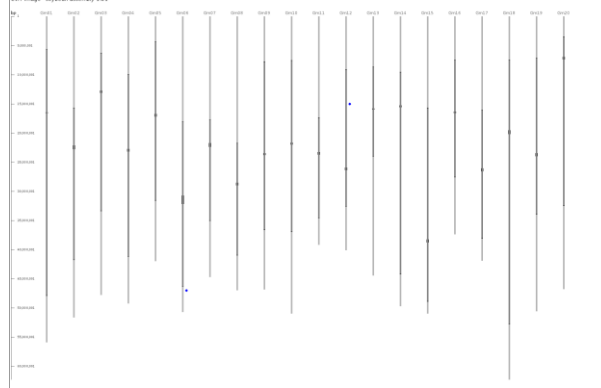


T-3

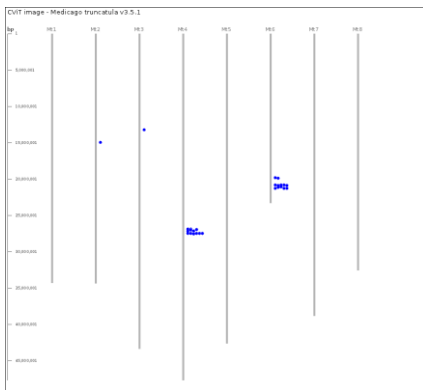
LccA1.04C14 *M. truncatula*



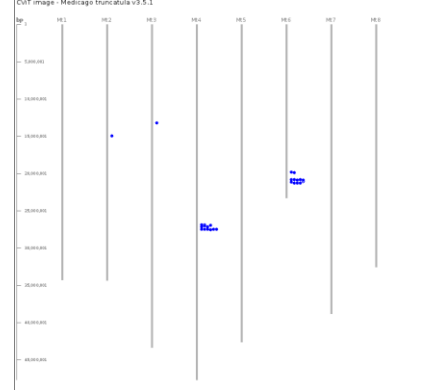
LccA1.04C14 *G. max*



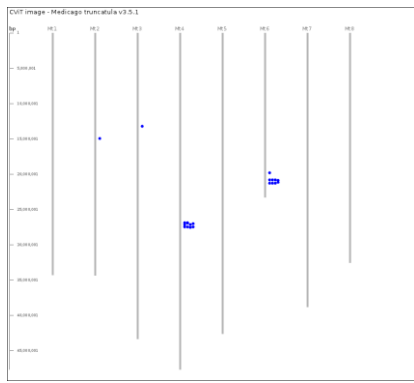
LccB1.15C2 *M. truncatula*



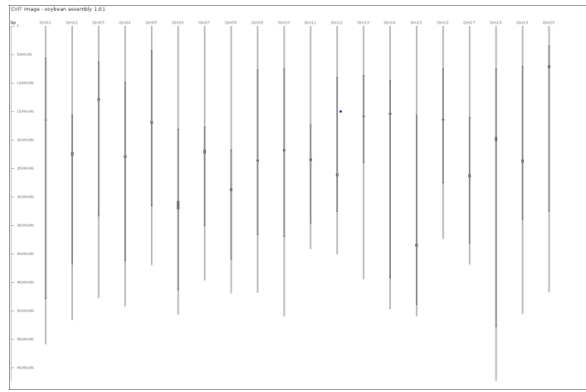
Lod1.01C2 *M. truncatula*



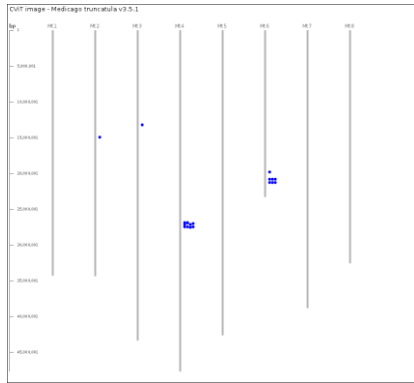
Lod1.01C14 *M. truncatula*



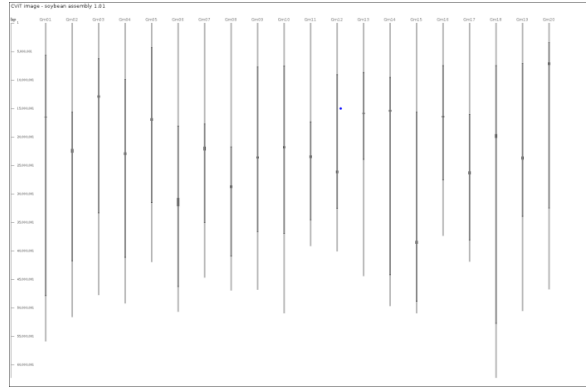
Lod1.01C14 *G. max*



Lto1.04C14 *M. truncatula*

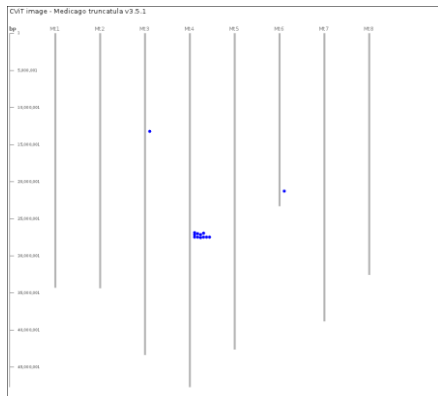


Lto1.04C14 *G. max*

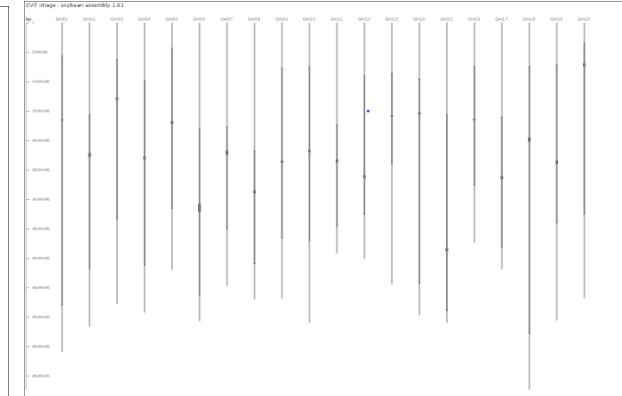


T-4

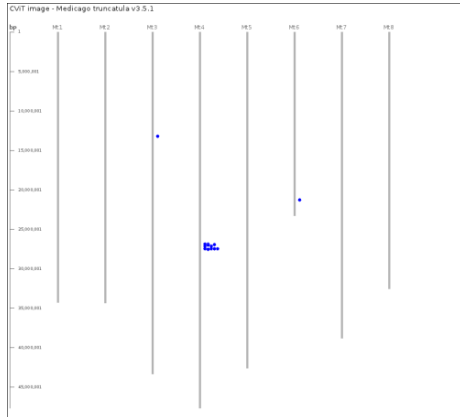
LccA1.01C2 *M. truncatula*



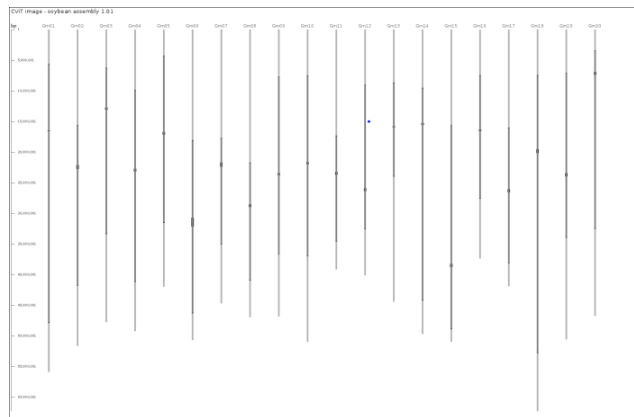
LccA1.01C2 *G. max*



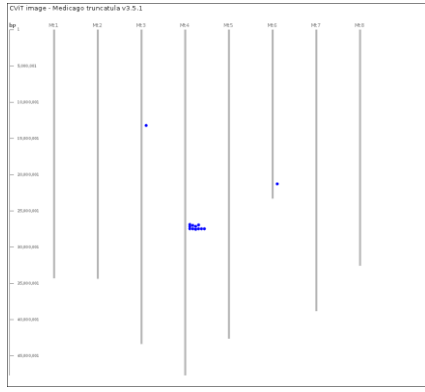
LccB1.11C3 *M. truncatula*



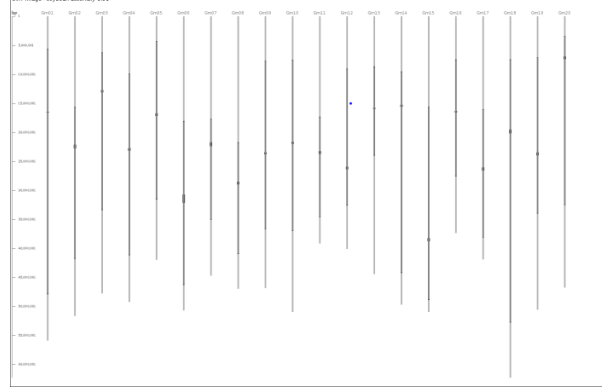
LccB1.11C3 *G. max*



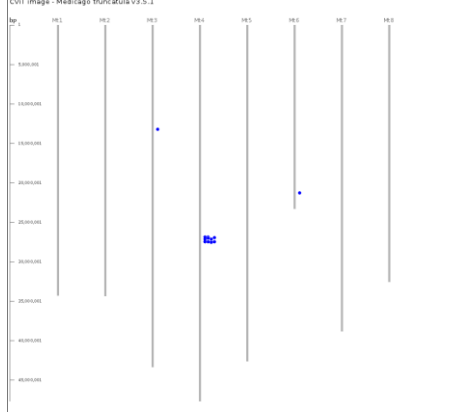
Lco1.05C2 *M. truncatula*



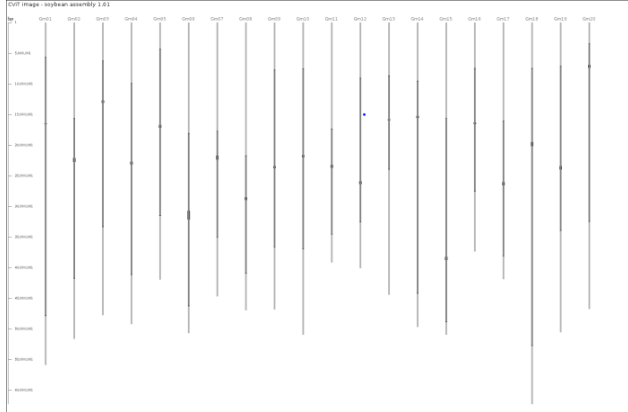
Lco1.05C2 *G. max*



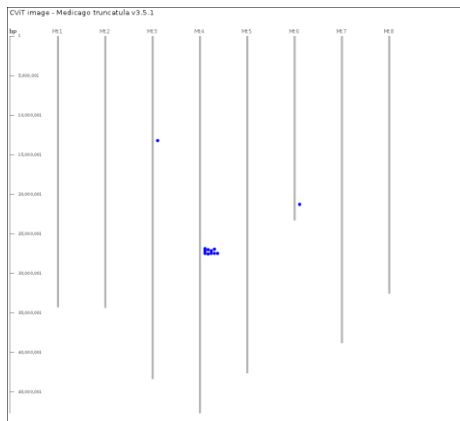
Lla1.07C2 *M. truncatula*



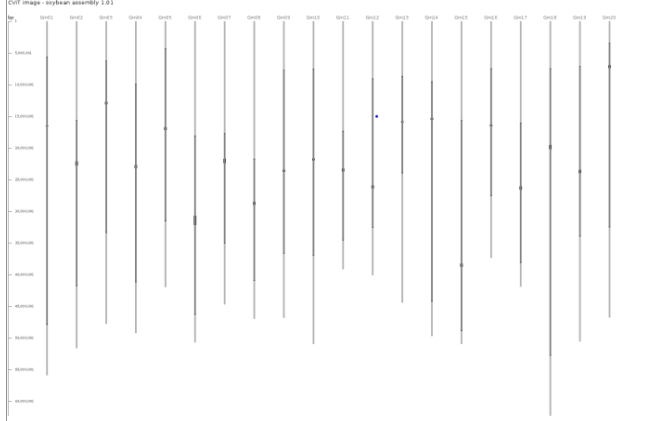
Lla1.07C2 *G. max*



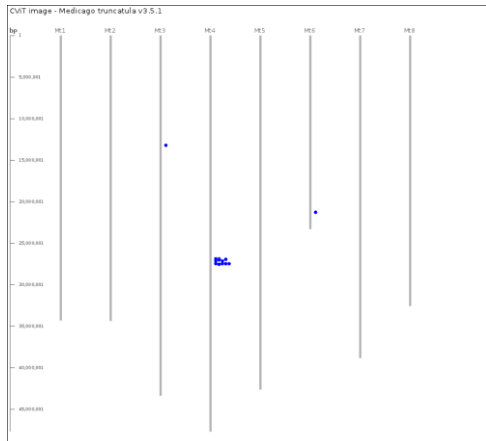
Lni1.04C2 *M. truncatula*



Lni1.04C2 *G. max*



Lod1.01C3 *M. truncatula*



Lod1.01C3 *G. max*

